

AUDIO / VISUAL



















VIDEO



BLACKMAGIC 2 MUE VIDEO SWITCHER

Everything you need for a small production. Comes with a Blackmagic ATEM Television Studio Pro HD, a Black Magic Duplicator 4K, a Black Magic Double Preview Screen, patch cables, and SD cards to record. All conveniently in a rolling case with sides that can be used as tables. Blackmagic ATEM Television Studio Pro HD features 8 X BNC, 12G/HD/SD-SDI; 2 x 3-Pin XLR, Audio; 1 x BNC, Reference; 1 x RJ-45, Ethernet; 1 x USB 2.0 Type B inputs, and 8 x BNC, 12G/HD/SD-SDI; 1 x BNC, Auxiliary; 1 x BNC, Program; 1 x BNC, MultiView; 1 x HDMI Type A, MultiView; 1 x 1/4" Stereo Headphone; 1 x D-Sub, RS-422 outputs.

Contents: Blackmagic ATEM Television Studio Pro HD, Blackmagic Duplicator 4K, Blackmagic Double, Preview Screen, Rolling Case, Patch Cable Kit, SD Card



A step above our Blackmagic Studio TV Switcher/Recording Kit. Featuring the Blackmagic Design ATEM 2 M/E Production Studio 4K paired with the Blackmagic Design ATEM 1 M/E Advanced Panel. ATEM 2 M/E allows for 21 video inputs, with 20 active, 16 video outputs, 2 XLR audio inputs, 2 XLR outputs, a 1 HDMI output. Our kit also includes a Blackmagic Double Preview Screen, Blackmagic HyperDeck Studio Pro with 2 1TB SSD cards to record, patch cables, and Up/Down/Cross converters. All packaged in a rolling flight case, with optional side tables.

Contents: Blackmagic Double Preview Screen, Blackmagic 2ME Video Switcher, Blackmagic 1ME Controller Advanced Panel, Blackmagic HyperDeck Studio Pro, Rolling Case, SanDisk Ultra SSD 3D 1TB Internal Ssd, Patch Cable Kit, Blackmagic UpDownCross Converter



BLACKMAGIC 4ME 8K VIDEO SWITCHER

Our king piece, or "Video Beast" as we affectionally call it. There's nothing this baby can't handle. Consisting of the Blackmagic ATEM Constellation 8K Switcher and Blackmagic Design ATEM 2 M/E Advanced Panel. This massive 4 M/E switcher features 40 12G-SDI inputs, 24 12G-SDI aux outputs, 4 DVEs, 16 ATEM Advanced Chroma Keyers, 4 media players, 4 independent Ultra HD multi viewers, 2 SuperSource processors and even standards conversion on all inputs. Paired with the ATEM 2 M/E Advanced Panel, that allows you to customize, monitor, and switch your live broadcast events with features such as camera switching, executing transitions, fades, DVE effects, and 8 on-air indicators. The panel features two rows of M/E with 20 input buttons per row, two system control LCDs, independent LCDs for custom labeling of every row and button, 20 direct cross points, 40 shifted cross points, two preview transitions, and various DSK transition selectors such as Auto, Cut, and Tie/Preview. Throw in a Blackmagic HyperDeck Studio 4K Pro for primary records and a Blackmagic HyperDeck Studio HD Plus for backup records. Along with 2 1TB SSD cards, patch cables, Up/Down/Cross converters, all housed in a flight case with a battery backup.

Contents: Blackmagic ATEM Constellation 8K Switcher, Blackmagic HyperDeck Studio 4K Pro, Blackmagic HyperDeck Studio HD Plus, SanDisk SSD Plus 1TB Internal SSD, ProX Utility Flight Case, CyberPower Battery Backup, Patch Cable Kit, Blackmagic UpDownCross Converter



CANON XF405

Featuring a 1.0-inch 4K UHD CMOS image sensor and dual DIGIC DV 6 Image Processors, the XF405 camera records in MP4 format to dual SD card slots. The camcorder is capable of recording 4K UHD video at 60p, as well as slow motion recording up to 120fps in Full HD. A 15x optical zoom lens maintains 4K UHD quality throughout the entire zoom range, while the camcorder's Dual Pixel CMOS AF helps facilitate fast and accurate autofocus.



CANON XF605

The XF605 camera features a 4K L-series 15x Optical Zoom lens with 3-ring manual control. XF605 can shoot 10-bit 4:2:2 4K UHD footage in XF-AVC and MP4 formats to dual SD cards for easy post-production and quick delivery. It features multiple recording modes including Frame, Interval, and Slow and Fast motion up to 120fps in FHD.



EPSON LASER 3LCD PROJECTOR

We pride ourselves in our innovative rental inventory and strive to provide our clients with the best that the event management industry has to offer. Our EPSON Laser Projector is best in its class for large venues, providing a powerful picture in any large setting.



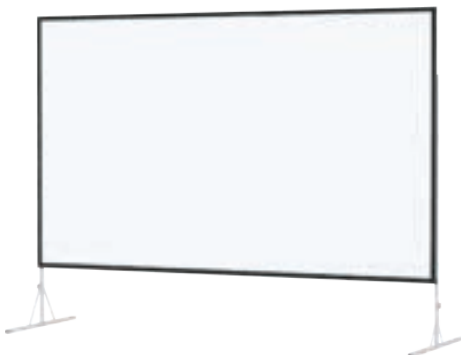
POWERLITE 3LCD PROJECTOR

Delivering high color brightness, Epson® 3LCD projectors ensure vibrant images. Featuring 3400 lumens of color brightness and 3400 lumens of white brightness, the 535W shines – even in sunny rooms. Project images up to 116" from 4" away with minimal shadows or glare. Use with a Projector Screen to complete the set up.



PROJECTOR SCREEN

Stop using the pull-down projector screen to prove your point. Get our 10 x 10 free standing projector screen to showcase the hard work you accomplished. Use with the Projector to complete the professional set-up.



FAST-FOLD SCREEN

Our Fast-Fold Screen is the perfect backdrop to any presentation or display. Measuring at 11'3" x 20' and 9' x 16' with 4K surface compatibility and improved height adjustment settings, this screen system is ready for action at any event.

AUDIO



CLEAR COMM

Any event requires communication and our Clear Comm Kit will provide you with just that. 15 Wireless headsets, 1 wired connection, 3 antennas to provide ample coverage, all contained in a versatile flight case that can double as an A2 station. Comes with a MacBook to easily assign and edit roles.

Contents: Freespeak II Antenna and stands, Freespeak II Base Station, Freespeak II Headset – Single Muff, Freespeak Belt Pack, ProX Utility Flight Case, Audio Macbook



WIRELESS MICROPHONE KIT (6 OR 12 PACK)

6 wireless receivers with the option to mix and match transmitters to your production needs. Any combination of 4 handhelds, 4 bodypacks with lavalier clip mics or 2 DPA countrymen mics, and a wireless podium mic. Wired, click-to-talk, as added backup. Or rent both kits for 12 receivers with any combination of 8 handhelds, 8 bodypacks with lavalier clips, 4 DPA countrymen mics, and dual wireless podium mics.

Contents: DPA 4288 Earset Microphone, Shure ULXD8 Wireless Gooseneck Microphone, Wired Microphone (Shure), Shure ULXD1 Belt Pack, Shure ULXD Lavalier Microphone, Shure ULXD 4D Receiver, Shure ULXD 4Q Receiver



SQ - 5 AUDIO MIXER

The SQ-5 is ready for any audio heavy event. The Automatic Mic Mixing means it is ready for multi-mic performances, while the USB input allows you to record direct to flash drive. Built for professionals with demanding events, lightweight and durable for any live sound application.



DX 168 AUDIORACK

This professional grade DX Expander comes equipped with durable hard-rubber bumpers to help protect it from the activity of performances. Lightweight and equipped with a handle, this little expander is ready to go offering the most convenience and portability for all of your audio video rental needs.

ASTERA WIRELESS LIGHTING



T A B L E T A N D T R A N S M I T T E R

The Astera transmitter is an interface between lights and controller. It can be used as a wireless DMX transceiver that connects to the AsteraApp and lights. Its built-in battery enables an easy and time-saving setup, just like with all of Astera's products.



W I R E L E S S P I X E L T U B E

Our Wireless Pixel Tubes measure at 40 inches and are great for lighting dance floors, runways, Hi Boys, furniture, stage backdrops, and more. Battery powered and available in any color, there is no limit on how these Pixel Tubes can be used. Suspend them against White Sheer Drapes for a dynamic LED backdrop at your next event.



T I T A N T U B E

Our Titan Tubes measure at 40 inches and are great for lighting dance floors, runways, furniture, stage backdrops, and more. Battery powered and available in any color, there is no limit on how these Titan Tubes can be used. Suspend them against White Sheer Drapes for a dynamic LED backdrop at your next event.



H E L I O S T U B E

Helios has all the features of the popular Titan Tube while offering a smaller format measuring at 21.7 inches. This allows it to be mounted in areas where a Titan Tube wouldn't fit and also increases portability. Helios Tube has 8 pixels and half the brightness of Titan Tube and just over half its length. Colors and brightness are perfectly matched to those of Titan Tube.



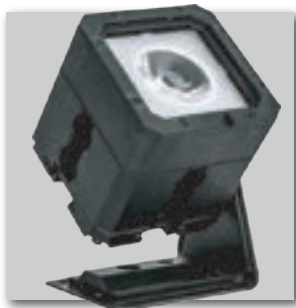
H Y P E R I O N T U B E

Introducing the double length Hyperion Tube which measures 2031mm and 79.96 inches. Double the LEDs, double the batteries, double the brightness, double the pixels and the same high-quality light with App, CRMX and on-tube control and wired DMX options.



W I R E L E S S L E D P U C K L I G H T 2 . 0

Our Wireless LED Puck Light 2.0 has a magnetic underside for flexibility in placement. This light is great for pinspotting, uplighting, and much more. This wireless unit has app control, broad range, and 4 - 20 hour battery life.



P I X E L B R I C K

The PixelBrick is a compact, battery-powered multi-function LED light with a high-quality output for film, TV, and stage production. This wireless unit has app control, broad range, and 4 - 20 hour battery life. It can be used as an uplight and pinlight with 4 different beam options.



A X 5

Whether you're looking for stage lighting or party lights, our AX5 3-In-1 Light is the perfect option. This wireless unit has app control, broad range, and 4 - 20 hour battery life. This all-in-one rental lighting solution that works in any venue or event space. With color changing LED technology, this is the perfect free-standing static light for any event.



A X 7

The AX 7 is the middle range of our LED lights. Battery powered so there is no need to worry about cords or gaff tape. This wireless unit has app control, broad range, and 4 - 20 hour battery life.



A X 1 0

Our Wireless XXL LED spotlight was built for anything; uplighting, wall washing, pinspotting, and stage lighting. This wireless unit has app control, broad range, and 4 - 20 hour battery life. It also works beautifully with all of our Spandex Structures and Shapes. This LED enabled wireless light is able to shine in any color with the use of a remote control.

LIGHTING



QUICKQ 10 LIGHTING CONSOLE

The newest of all of the lighting consoles in our inventory. Large user friendly touch screen that supports pinching and zooming and scrolling. External power required.



GLP IMPRESSION X4 S MOVING HEAD

Our GLP Impression Moving Head features seven high-powered LED's that provide impeccable lighting in both beam and smooth wash settings. This light can display the full color spectrum and is controlled by the DMX Lighting Console Find more lighting options to complete your rental event lighting plan in our Intelligent Lighting category!



VARI WASH

This powerful motorized light creates beautiful wash effects with down to the pixel control. Intelligent cooling system and heat proof plastic makes this a great addition to any lighting display.



VARI SPOT 200

This high powered professional spotlight comes fully equipped with eight alternating GOBOS, Rainbow Colors, 200W White LED, all affixed to a moving head for a full range of lighting options.



GLP GT-1

Plug in this free standing event light for an instant, professional, event lighting experience. Cycle through infinite colors or choose a fixed color option. Dazzle guests with dynamic lighting animations with this GLP GT-1 rental. Perfect for use in event or stage lighting.



ROSCO V-HAZER

From the quiet fan to auto shutoff features, our Rosco V-Hazer is everything you need to upgrade your next event space. This professional hazer rental provides an even distribution of haze and maximized output, this hazer is not something to forget if you're looking to create the perfect ambiance. Use alone or combine with the Rosco Fog Machine to maximize the effect.



ROSCO FOG MACHINE

This professional grade Rosco Fog Machine is remote control enabled and can easily be incorporated into lighting designs and effects. Perfect for event and stage use to add long lasting fog effects. This is the most effective option in event fog machine rentals.

AUDIO / VISUAL PRO RENTALS

We offer a vast inventory of A/V rentals and have a team of expert technicians to assist in set-up and operation. You can rent individual A/V components or our easy-to-use kits, to help simplify the planning process. Pick-up your rentals yourself or have our team take care of delivery, set-up for you. We'll even stay onsite to execute a smooth and flawless production.



info@intheevent.com
801-886-1144
intheevent.com

3008 South 300 West
Salt Lake City, UT 84115

